

# seaco®

— Equip for *adventure* —

## MARINE PRODUCTS

FULL RANGE CATALOGUE



## With *spirit*

Without risk there is no adventure.  
But the best equipment minimises risk  
while expanding horizons.

*This spirit lives in everything we do,  
design, make and maintain.*

Our aim is to equip you as we would a friend,  
as many of our customers are, with what you  
need to be safe, in pursuit of your adventure.  
We seek the best of life — the near and

nurtured coupled with the unknown  
and the horizon-expanding.

We are our customers' companion in this  
adventure. Mutual safety is our first priority.

*Our equipment is meticulously designed and  
crafted to push the boundaries of sea safety  
- to go further, reach higher - and allow our  
customers to do the same.*

Equipped for *adventure*  
Founded on *friendships*



## Lifejackets

6

And accessories. Featuring our full range + Servicing on page 15



## Life rafts

20

And accessories. ISO certified range + Servicing on page 32



## Recovery / Flares

33

Including our new range of flares



## Fire extinguishers

36

Including SOLAS and MED approved



## Tenders

38

Wide selection — recently extended



## Paddle Boards & Kayaks

46

Brand new kayak range



## Fenders

50

New colour ways



## Wire & chain

56

Our new extended range



## Accessories

58

General accessories including bags

New

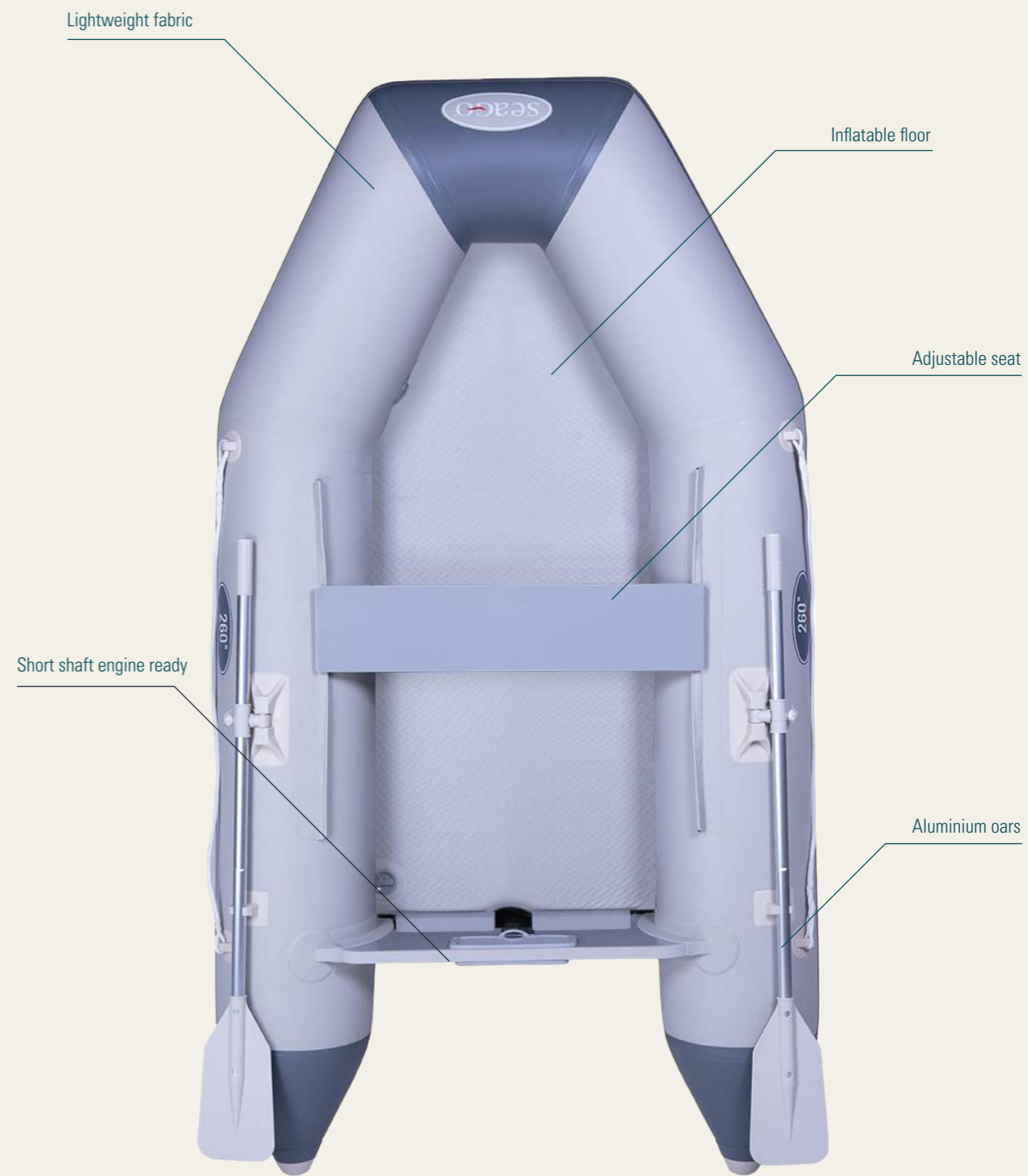


new

### *Inflatable Kayaks*

Three brand new inflatable kayaks from Seago, let the adventure begin  
Page 48

New



new

### *AF Tenders*

Available in two sizes, this new model has been meticulously designed to be compact and lightweight  
Page 42



*“Never fear quarrels,  
but seek hazardous  
adventures.”*

*Alexandre Dumas, The Three Musketeers*



A new dimension in  
*Lifejackets*

# innovation as standard

## Three ways we redesigned the lifejacket

Recently we had a rethink. We focused our thoughts on what it means to work, to create and sell products. We challenged ourselves to understand why we do this, why

our founders did it, and why we continue passionately today. The simple answer is *friendships and adventure* - and we now understand this as the *Seago Spirit*.

This process helped us to redesign our core product, the life jacket, as a reflection of our true values. Here are three of the leading features which illustrate our rethink and new course.

### Buckles

Every lifejacket in the Seago range has been rethought to be safer, more comfortable and more convenient. Buckles are used at least twice every wear. We set out to make this experience virtually effortless in all conditions. The **Rapid Buckle** on the new 3Dynamic is 5X faster during in-house testing. On the Active range new Easy Fit & Release design dramatically speeds up the same process.



### Cylinder safe

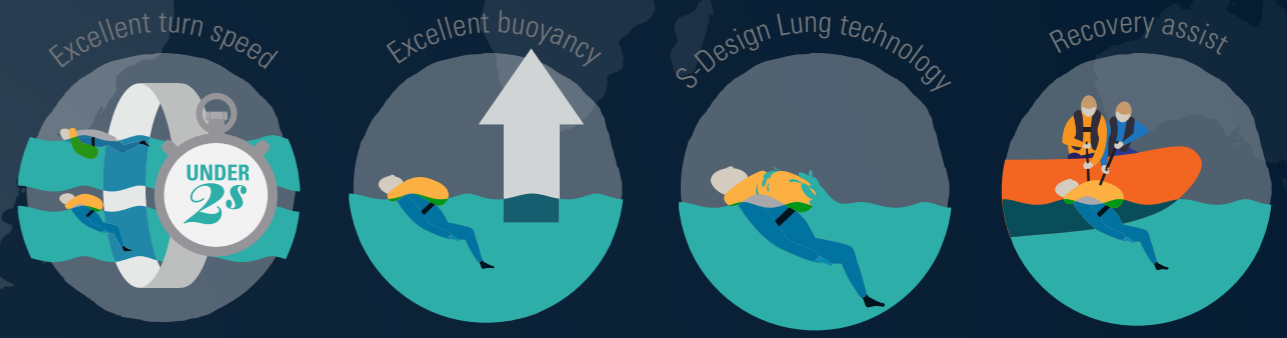
We set out to address one shocking fact about lifejacket cylinders: CO<sup>2</sup> cylinders can loosen when lifejackets are worn. Less than 100% secure cylinders can mean your lifejacket

may not inflate putting your life in danger. For us, that's a problem you simply can't leave unaddressed. Fitted as standard to every lifejacket in our range is **Cylinder Safe**, a unique innovation

which greatly reduces cylinder loosening.



### S-lung



The **S Design lung** is about one thing only: increased safety in the water to prolong survival. A standard lung shape on traditional lifejackets allows water to flow along the centre channel towards the face adding to the risk of secondary drowning. This seems counterintuitive to us, especially because adrenaline can cause users to breathe quickly. We invented the S Design lung to guide wash away from the wearer's mouth.

Seago's unique S Design lung also includes these features:



- Unique wash redirection S Design
- Oral tube
- Light and whistle
- SOLAS reflective tape
- Cylinder Safe



# 3Dynamic

Part numbers		
3D	190	Pro
3D	300	Pro

Models (with harness)	Pro Elite	
Buoyancy (n)	190	
	300	
ISO	12402-3	
	12402-2	
Rearming		
Part number		Kit no
PERK 38	Auto	15
PERK 60	Auto	16



Black / Carbon (190n)  
Carbon / Black (300n)

# Active PRO

Part numbers		
AC	190	PS

Models (with harness)	Pro Elite	
Buoyancy (n)	190	
ISO	12402-3	
Rearming		
Part number		Kit no
PERK 38	Auto	15



Sky blue  
Navy  
Red

## 3Dynamic

Seago's completely redesigned flagship lifejacket. Our design team have combined a range of new features in one lifejacket that ensures elite performance and safety, together with maximum comfort.

The **3Dynamic** incorporates innovative design and technology advances, bringing to the world's sailing community the Rapid Buckle, Cylinder Safe and S Design lung together with LED multi flash light, spray hood and pocket for your knife. This means everything customers (pro and enthusiast) tell us they need is close at hand. The team is incredibly proud of the advanced design features which make the 3Dynamic a market forerunner.

Full specification on charts at end of section

- Rapid release (1)**  
Fast on and off
- Superior buoyancy**  
As standard
- Splash defence (2)**  
S Design lung and spray hood standard
- Cylinder Safe**  
Secures cylinder
- Water resistant pocket (3)**  
Ideal for knife/PLB
- SOS Light (4)**  
Water activated
- 3D contour fit**  
Complete freedom of movement
- Burst zip**  
Improves speed of inflation
- Status window (5)**  
Instantly check jacket status
- Double crutch strap**  
Fitted as standard

## Active Pro

For those looking for the complete lifejacket package the **Active Pro** is all that you need. The Active Pro has all the usual Seago safety features of the standard Active model but with the addition of some key features such as integrated spray hood and SOLAS LED light.

The UM Pro elite firing system with a clear view status window to give you the reassurance that your lifejacket is always ready for use.

Full specification on charts at end of section

- Cylinder Safe**  
Secures cylinder
- Easy fit & release**  
Simplified donning
- Superior buoyancy**  
As standard
- Splash defence (1)**  
S Design lung and spray hood standard
- Double crutch strap**  
Fitted as standard
- SOS Light (2)**  
Water activated
- 3D contour fit**  
Complete freedom of movement
- Burst zip**  
Improves speed of inflation
- Status window (3)**  
Instantly check jacket status

# Active 190



 Sky blue



 Navy



 Red

Part numbers		
AC	190	M
AC	190	A
AC	190	AH

Models	Automatic	
	Automatic + harness	
	Manual	
Buoyancy (n)	190	
ISO	12402-3	
Rearming		
Part number		Kit no
ARK	38	Auto 7
MRK	38	Man 6

# Active 300



 Navy

Part numbers		
AC	300	AH

Model	Automatic + harness	
Buoyancy (n)	300	
ISO	12402-2	
Rearming		
Part number		Kit no
ARK	60	Auto 11

## Active 190

The new range of **Active** lifejackets from Seago have been designed to combine maximum comfort with outstanding performance. You won't know you're wearing it until it's needed.

High volume buoyancy together with unique safety features make this jacket the first choice for those with safety and convenience in mind. The introduction of Cylinder Safe and S Design lung features demonstrate Seago's ongoing investment in safety innovation. The 3D contour design reduces the surface area in contact with your body offering unparalleled freedom of movement for both men and women.



**Cylinder Safe**  
Secures cylinder



**Double crutch strap**  
Fitted as standard



**Superior buoyancy**  
As standard



**Burst zip**  
Improves speed of inflation



**3D contour fit**  
Complete freedom of movement



**Firing options**  
Hammar or MK5

Full specification on charts at end of section

## Active 300

The new range of **Active** lifejackets from Seago have been designed to combine maximum comfort with outstanding performance. You won't know you're wearing it until it's needed.

High volume buoyancy together with unique safety features make this jacket the first choice for those with safety and convenience in mind. The introduction of Cylinder Safe and S Design lung features demonstrate Seago's ongoing investment in safety innovation. The 3D contour design reduces the surface area in contact with your body offering unparalleled freedom of movement for both men and women.



**Cylinder Safe**  
Secures cylinder



**Double crutch strap**  
Fitted as standard



**Easy fit & release (1)**  
Simplified donning



**Burst zip**  
Improves speed of inflation



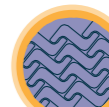
**Superior buoyancy**  
As standard



**Firing options**  
Hammar or MK5



**3D contour fit**  
Complete freedom of movement



**Maximum comfort (2)**  
Super soft neckline material

Full specification on charts at end of section

# WAVEGUARD JUNIOR-150



Red

Part numbers		
WG	100	J

Models	Pro sensor + harness
Buoyancy (n)	100
ISO	12402-3
Rearming	
Part number	Kit no
PERK 24	Auto 17

## Waveguard Junior

The new Seago **Waveguard Junior** lifejacket is a revelation in design, comfort and safety, incorporating the S Design lung and easy fit buckle as well as upgraded material.

The pro-sensor firing mechanism with viewing window as standard ensures you can visibly assess the status of your child's lifejacket. This, together with the cylinder safe fitted as standard, illustrates safety as Seago's first priority.

The lifejacket design features a neoprene collar to maximise comfort, with a high visibility lifejacket colour to ensure additional safety.

Full specification on charts at end of section



**Status window (1)**  
Parent/trainer instant check



**Easy fit & release**  
Simple for young and old



**Maximum comfort (2)**  
Super soft neckline material



**Lightweight D-ring**  
Secure junior to the craft easily



**Cylinder Safe**  
Secures cylinder



**Buoyancy**  
ISO 12402-3 approved and surpassed



**S Design Lung**  
Protection from sea wash



**Double crutch strap**  
Fitted as standard



**Retro fit capability**  
For life jacket light



**Pro elite firing (3)**  
Automatic with status indicator

# SEAGUARD



Models & colours	Automatic	Manual	Auto/Harness
Grey/black	✓	✓	✓
Green	✓	✓	
Blue	✓	✓	✓

Buoyancy (n)	165
ISO	12402-3
Rearming	
Part number	Kit no
ARK 33	Auto 4
MRK 33	Man 3

## Seaguard 165

The versatile **Seaguard 165** is an updated design of a popular lifejacket model that Seago has been selling for more than a decade.

The comfortable contoured neck design and its light weight combine to make this lifejacket one of the most preferred entry level models.

Full specification on charts at end of section

The abrasion resistant cover, together with a newly designed buckle and lightweight D-ring makes the Seaguard 165 an all round lifejacket.

- Semi integrated lung
- Contoured neck design
- Lightweight
- New colourways
- Wipeclean model



new

Wipe clean

Orange



Navy



Red



Grey/black



# Classic

The **Classic 190** is Seago's longest selling lifejacket. For over 25 years it has stood the test of time, not only in design but also reliability, specification and performance. The fixed lung design, makes our 'Classic' the easiest lifejacket in the range to repack after inflation.

Our customers know that they can use, repack, and perhaps most importantly, feel confident in recommending the Classic 190 to friends and family.

 Red / Navy

Part numbers		
C	190	M
C	190	AH
C	190	A



Models	Automatic	
	Automatic + harness	
	Manual	
Buoyancy (n)	190	
ISO	12402-3	
Rearming		
Part number		Kit no
ARK 38	Auto	7
MRK 38	Man	6

- Integrated lung
- Classic design
- Twin back strap

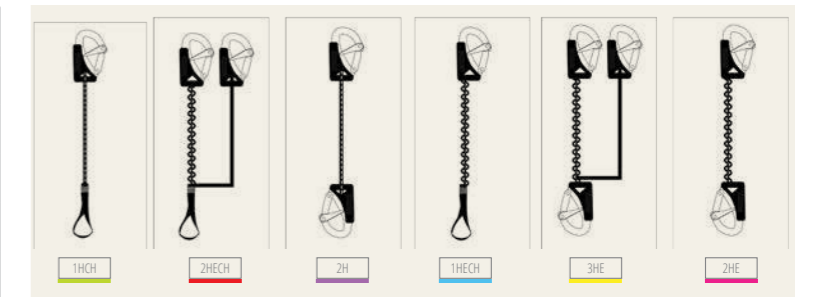
## Safety lines

All Seago safety lines are ISO certified and conforms to latest PPE regulation (EU) 2016/425, EN ISO 12401 :2009 requirements. We have colour coded these to make choosing the right line easy. All Seago safety lines have the following features:

- Seago safety lines have high visibility overload indicators as standard
- High performance narrow gauge lightweight safety line webbing
- UV protected and low water absorption
- Marine grade stainless steel 316 suitable for harsh environments
- Mesh bag to help store, keep dry and protect your product



1HCH	1 Safety hook with cow hitch standard webbing
1HECH	1 Safety hook with cow hitch elasticated webbing
2H	2 Safety hooks with standard webbing
2HE	2 Safety hooks with elasticated webbing
2HECH	2 Safety hooks with cow hitch elasticated webbing
3HE	3 Safety hooks with elasticated webbing



# seago® Lifejacket SERVICING

Seago can service: SEAGO • SPINLOCK • BALTIC branded lifejackets at our fully equipped service centre by our highly qualified service technicians.

See our fixed prices now: [seagogroup.com/leisure/service-detail](http://seagogroup.com/leisure/service-detail)



## Sea Bright - Lifejacket light

The Seago Sea Bright lifejacket light is extrem compact with no cable and includes a bracket for easy attachment to a lifejacket oral tube. Automatically activates on contact with water with the ability to switch off in daylight.

- SOLAS and USG approved
- Test facility
- Easy attachment to any lifejacket
- Flashes 50-70 times per minute
- Alkaline battery
- 5 Year battery

Part number
SEA-BRIGHT



new

## Spray hood

The Seago spray hood is the second line of defence to a person in the water wearing a lifejacket. The high visibility hood is deployed from the rear of a lifejacket (when fitted) so it can be quickly pulled over the head and attached to the underside of the lifejacket lung. The spray hood is compact and will not add bulk to the neck of your lifejacket

- Enhances lifejacket value
- Retro-fits on most lifejackets
- Protects from secondary drowning
- Simple to deploy in the water
- High visibility yellow

Part number
S- HOOD



	<b>Dynamic</b>		<b>Active PRO</b>			<b>WAVEGUARD JUNIOR-150</b>
Part number (colour letter goes at end)	3D-190-PRO	3D-300-PRO	AC-190-PS			WG-100-J
	CB	BC	R	B	N	R
Model	3D	3D	190 pro			Jnr
Firing Head	Pro Sensor	Pro Sensor	Pro Sensor			Pro Sensor
Buoyancy (N)	190	300	190			100
Harness	✓	✓	✓			✓
Lung design	S type	S type	S type			S type
Neoprene collar	✓	✓	—			✓
Cylinder Safe	✓	✓	✓			✓
Double Crutch Strap	✓	✓	✓			✓
Water Resistant Pocket	✓	✓	—			—
Spray Hood	✓	✓	✓			—
Light	✓	✓	✓			Retro fit
Add PLB?	✓	✓	✓			—
Burst Mechanism	ZIP	ZIP	ZIP			Velcro
Rearming Kit Number	8	12	8			2
Weight (kg)	40+	40+	40+			20-50
Chest (cm)	55-140	55-140	55-140			55-140
Whistle	✓	✓	✓			✓

	<b>Active</b>				<b>Classic</b>			<b>SEAGUARD</b>					
Part number (colour letter goes at end)	AC-190-M		AC-190-A		AC-190-AH		AC-300-AH	C-190-M	C-190-AH	C-190-A	SG-165-M	SG-165-A	SG-165-AH
	R	B	N	R	B	N	R	RN	RN	RN	CB/N/G	CB/N/G	CB/N
Model	190		190		190		300	190	190	190	165	165	165
Manual	Manual		MK5 Auto		MK5 Auto		MK5 Auto	Manual	Auto	Auto	Man	Man/Auto	Man/Auto
Buoyancy (N)	190		190		190		300	190	190	190	165	165	165
Harness	—		—		✓		✓	—	✓	—	—	—	✓
Lung design	S type		S type		S type		S type	Integrated	Integrated	Integrated	Semi Integrated	Semi Integrated	Semi Integrated
Neoprene collar	—		—		—		✓	—	—	—	—	—	—
Cylinder Safe	✓		✓		✓		✓	✓	✓	✓	✓	✓	✓
Double Crutch Strap	✓		✓		✓		✓	✓	✓	✓	✓	✓	✓
Water Resistant Pocket	—		—		—		—	—	—	—	—	—	—
Spray Hood	Retro fit		Retro fit		Retro fit		Retro fit	—	—	—	Retro fit	Retro fit	Retro fit
Light	Retro fit		Retro fit		Retro fit		Retro fit	Retro fit	Retro fit	Retro fit	Retro fit	Retro fit	Retro fit
Add PLB?	✓		✓		✓		✓	—	—	—	—	—	—
Burst Mechanism	ZIP		ZIP		ZIP		ZIP	Velcro	Velcro	Velcro	Velcro	Velcro	Velcro
Rearming Kit Number	6		7		7		11	6	7	7	3	4	4
Weight (kg)	40+		40+		40+		40+	40+	40+	40+	40+	40+	40+
Chest (cm)	55-140		55-140		55-140		55-140	55-140	55-140	55-140	55-140	55-140	55-140
Whistle	✓		✓		✓		✓	✓	✓	✓	✓	✓	✓



Register your lifejacket at [Seagoyachting.co.uk](http://Seagoyachting.co.uk) to activate our unique **warranty and servicing schedule** - essential for lifejacket maintenance.



Register your lifejacket at [Seagoyachting.co.uk](http://Seagoyachting.co.uk) to activate our unique **warranty and servicing schedule** - essential for lifejacket maintenance.

*“He who lets the sea  
hull him into a sense  
of security is in very  
grave danger.”*

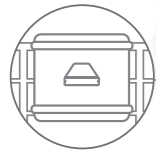
*Hammond Ines, Novelist*



*Life rafts  
Recovery & Fire extinguishers*

## STORAGE

Easily attach externally for maximum safety\*



## INFLATES

Safely and in seconds



## PLATFORM

For easy boarding via a ladder\*



## BALLAST

Pockets fill fast for stability in harsh conditions



## THERMAL

Floor offers protection in cold seas



## STROBE LIGHT

And porthole for flare deployment



### 1. Deployment

FLEXIBLE: From the vessel or water when necessary

### 2. Boarding

FAST: In cold water seconds can be lifesaving

### 3. Rescue

ENDURING: Staying warm and raising alarm

# innovation as standard

## Rethinking the life raft, step-by-step

At Seago in the last few years we've been taking a step back; looking at each of our core products with fresh eyes. Our mission is to deliver an ever improving brand of sea safety we would wish for a friend, as many of our customers are. With life rafts we started with a blank page. Every element has been challenged and, where possible, refined to create the most compact and yet safest life rafts we have ever produced. They will deploy, help you out of the water and assist rescue aiming to save absolutely crucial seconds at every step.

#### Cold water survival chart

Water Temperature (Fahrenheit)	Exhaustion or Unconsciousness (minutes / hours)	Expected Time of Survival (minutes / hours)
32.5	Under 15m	Under 15-45m
32.5 - 40	15-30m	30-90m
40 - 50	30 to 60m	1 to 3h
50 - 60	1 to 2h	1 to 6h
60 - 70	2 to 7h	2 to 4h
70 - 80	2 to 12h	3h to indefinite
Over 80	Indefinite	Indefinite

\*Internal storage option also available

\*ISO 1 version shown above includes boarding ramp, ISO 1 & 2 have ladder

ISO 9650-1 **sea** Master-Plus

*For ocean & charter*

The SeaMaster Plus conforms to the latest ISO9650-1 TYPE 1 standard and is the perfect partner for offshore sailing on recreational or coded craft. Designed and refined over many years in partnership with professionals.

We have worked with users from a variety of backgrounds to design and vigorously test this raft, which, as a result, has become one of the flagship Seago products.

For a brand which has built its reputation on giving a close knit community of sailors what they need to remain safe in pursuit of adventures big and small, the SeaMaster Plus truly embodies the Seago Spirit.

-  **Internal & external lights**  
Flashing exterior light draws attention
-  **Inflates in seconds**  
Minimising exposure, improving odds
-  **NEWISO Safety Pack as standard**  
Includes water and Thermal protective aids  
See end of section for details
-  **Hand-over-hand grab lines**  
Aiding fast boarding
-  **Durable Seago rubber chambers**  
We believe the safest and strongest material in life raft design
-  **Over pressure valve**  
Preventing over inflation

Full spec at end of section



**Easy boarding**

When boarding from the water every second really is essential. Body temperature and survival chances will decrease fast in cold conditions. Seago's inflatable step makes it easier and faster.



**Independent chambers**

The rubber used to make the life raft chambers is exceptionally strong, but in the unlikely event one chamber is punctured the other will remain inflated and support a raft filled to capacity.



**Fresh water collection system**

Drinking water is one of the main necessities of survival. This collection system ensures that rain is not wasted but captured and retained



**Thermal layer**

Once safely inside the raft the Seago thermal layer will offer occupants essential protection from icy seas. The layer keeps body heat inside the life raft while reducing the cooling impact of the water temperature, day and night.



**Ballast pockets**

The raft is equipped with 4 x 55L ballast pockets that are crucial in stabilising the raft and help prevent the raft from overturning in challenging sea conditions.



APPROVED  
MMF NUMBER



TYPE: ISO 9650-1 TYPE 1 Pack 2

Packed	Part no.	Capacity (Person)	L(mm)	W(mm)	H(mm)	Weight (kg)
Canister	4C-MASTER-PLUS	4	730	490	280	40
	6C-MASTER-PLUS	6	750	510	320	46
	8C-MASTER-PLUS	8	750	510	320	53
	10C-MASTER-PLUS	10	780	530	350	62
	12C-MASTER-PLUS	12	830	560	380	66
Valise	14C-MASTER-PLUS	14	880	600	400	75
	4V-MASTER-PLUS	4	600	280	400	36
	6V-MASTER-PLUS	6	700	270	400	42
	8V-MASTER-PLUS	8	700	290	450	48
	10V-MASTER-PLUS	10	700	280	500	54

NOTE: Valise dimensions are approximate and can vary due to vacuum forming.



STORAGE: Valise or canister and cradle available - see accessories page 29

ISO 9650-1 **sea Cruiser - Plus**

*For coast & cruising*

The all new Sea Cruiser Plus liferaft is certified to the latest ISO 9650-1. Specification not only complies with ISO9650-1 TYPE 2 but surpasses its requirements in certain critical areas.

As part of our continuing design review we have identified the importance of a thermally insulated floor to prevent hypothermia, even when used in coastal conditions.

Therefore all Sea Cruiser Plus liferafts have a thermally insulated floor, this surpasses the basic requirements of the ISO 9650-1 TYPE 2 that does not specify one.

**Independent chambers**  
Stays afloat with puncture in one chamber

**Inflates in seconds**  
Minimising exposure, improving odds

**ISO Safety Pack as standard**  
Includes 2 parachute rockets  
See p30 for details

**Hand-over-hand grab lines**  
Aiding fast boarding

**Durable Seago rubber chambers**  
We believe to be the safest and strongest material

**Over pressure valve**  
Preventing over inflation



**Ladder boarding**

When boarding from the water every second really is essential. Body temperature and survival chances can drop rapidly in colder conditions. This new boarding ramp and ladder makes it easier and faster.



**Internal & external light**

A powerful external flashing light can be seen for miles in good conditions, maximising the chance of rescue, while the internal light helps to maintain essential night time visibility.



**Fresh water collection system**

Drinking water is one of the main necessities of survival. This collection system ensures that rain is not wasted but captured and retained



**Thermal layer**

Once safely inside the raft the Seago thermal layer will offer occupants essential protection from icy seas. The layer keeps body heat inside the life raft while reducing the cooling impact of the water temperature, day and night.



**Ballast pockets**

The raft is equipped with 4 x 55L ballast pockets that are crucial in stabilising the raft and help prevent the raft from overturning in challenging sea conditions.



APPROVED  
MMF NUMBER



TYPE: ISO 9650-1 TYPE 2 Pack 2

Packed	Part no.	Capacity (Person)	L(mm)	W(mm)	H(mm)	Weight(kg)
Canister	4C-CRUISER-PLUS	4	680	430	260	35
	6C-CRUISER-PLUS	6	730	490	280	40
	8C-CRUISER-PLUS	8	750	510	320	43
	10C-CRUISER-PLUS	10	780	530	350	49
Valise	4V-CRUISER-PLUS	4	600	280	400	30
	6V-CRUISER-PLUS	6	700	270	400	35
	8V-CRUISER-PLUS	8	700	290	400	37
	10V-CRUISER-PLUS	10	700	280	500	41

NOTE: Valise dimensions are approximate and can vary due to vacuum forming.

Full spec at end of section



STORAGE: Valise or canister and cradle available - see accessories page 29

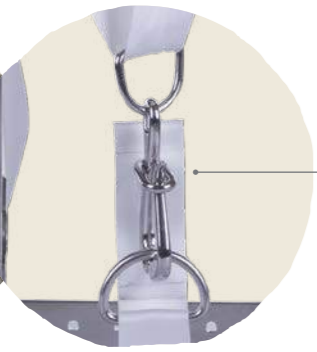
## Premium cradle

This premium product is made from high strength marine grade 316 stainless steel. The frame is fully adjustable to accept most life rafts from sizes 4 to 12 person and can be mounted on the pushpit, deck or coach roof. Adjust the mounting brackets on the frame by sliding in both horizontal and vertical directions to cater for most pushpit configurations. The life raft is securely retained by a high strength polyester webbing strap. The raft can be quickly released using the quick release buckle. Hydrostatic release mechanisms can also be fitted.



- Universal fixing mechanism
- Quick release buckle
- Adjustable rail mount
- Heavy duty 316 stainless steel
- Adjustable webbing straps
- Market leading specification
- Suitable for 4-12 man raft

Part number	W (mm)	D (mm)	H (mm)	Weight (kg)
LRC PREM Cradle	680-900	260	430	3.2



## Deck straps

The Seago deck straps for life rafts can be mounted on your deck or coach roof providing means to access your life raft in an emergency situation. All the fittings are 316 stainless steel marine grade.

The deck straps are secured with a quick release link which can be used for a hydrostatic system.

Part number
LR WEB-STRAP

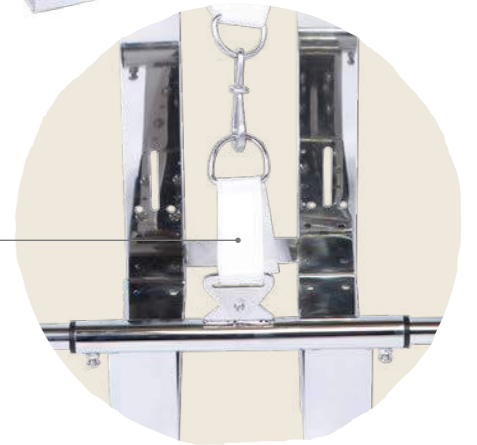
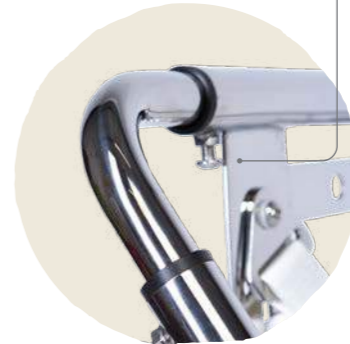


## Elite vertical cradle

The Elite vertical cradle is fully adjustable to allow perfect fitting of liferafts from 4 person to 16 person. Made from the best marine grade 316 stainless steel this robust cradle is ideal for anyone needing a great way to store and access their liferaft. The Elite cradle can be deck mounted either vertically or horizontally and will work with a hydrostatic release unit, comes with webbing straps and quick release buckle.

- Vertical and horizontal mount
- Quick release buckle
- Fully universal adjustment
- Heavy duty polished 316 stainless steel
- Adjustable webbing straps
- Market leading specification
- Suitable for 4-16 man raft

Part number	W (mm)	D (mm)	H (mm)	Weight (kg)
LRC ELITE Cradle	520-765	290-465	782	8.8



## Thanner hydrostatic release

Thanner Disposable Hydrostatic Release Units are all patented units, designed for trouble free installation, reliable function and service free lifetimes of 4 years /48 months or 2 1/2 years /30 months after correct installation. The units are all approved to the new MED and SOLAS regulations together with ships wheel approval, USCG, TC and many others. The units are made from stainless steel and UV- resistant plastics to meet the tough requirements of the marine environment. The units operate independently of the life raft buoyancy and is approved for all sizes of life raft! up to a buoyancy load of 1500kgs. All parts can be recycled and are made from non-toxic materials. Special versions/other release depths are available on request.

- Operating independently of life raft buoyancy.
- 4-year Operational Service Life
- No servicing requirements. Weight 300 g.



Part number
LR SPARE-244

## Safety packs

The Seago safety pack and the life raft conforms to the **ISO-9650** requirements.

The safety pack can easily be upgraded to meet the requirements of a >24hr Pack or SOLAS B Pack. **All the items listed adjacent in PACK 2 are standard in Seago life rafts**, the most comprehensive life raft on the market. Approved by Bureau Vertias and RINA.

- = Qty in Safety Pack 2
- = Additional to Safety Pack 2



**Staydry 50l dry bag**

All items in 24h Pack or SOLAS B pack if not included within the liferaft will come in a Staydry 50l bag

	Safety Pack 2	+ 24h Pack	SOLAS B Pack
Included with  Master-Plus	✓	—	—
Included with  Cruiser-Plus	✓	—	—
Parachute rockets	••		
Buoyant bailer	•		
Sponge	••		
Whistle	•		
Day light signalling mirror	•		
Sea sickness bag per person	•		
Illustration of survival signals	•		
Hand pump	•		
Repair kit	•		
Operation manual	•		
Paddles	••		
Rescue quoit	•		
Knife	•		
Sea sickness tablets per person (may come in a separate grab bag)	•••••		
Wet note book	•		
Red hand flares	•••	•••	
Torch (inc spare batteries / bulb)	•	•	
Sea anchor	•		•
First aid kit	—	•	•
Thermal protective aid	—	••	••
10,000 K/j food ration per person	—	•	
1.5 Litres of water per person	—	•	
Buoyant smoke signal	—		•
Radar reflector	—		•



## Life raft specification chart

	SeaMaster Plus	SeaCruiser Plus
Approval type	ISO 9650 - 1 TYPE 1	ISO 9650 - 1 TYPE 2
Lowest firing temperature	-15°C	0°C
Max capacity	12	10
Fixed Storage	✓	✓
Portable Storage	✓	✓
Boarding ramp and ladder	—	✓
Inflatable platform boarding	✓	—
Ballast pockets	✓	✓
Thermal Layer	✓	✓
Reflective Tape	✓	✓
Viewing Portal	✓	✓
Over Pressure Valves	✓	✓
Hand-over-hand grab lines	✓	✓
Righting Strop	✓	✓
Drinking Water Collection System	✓	✓
Independent Canopy	✓	✓
Independent Inflation Chambers	✓	✓
External Light (Flashing)	✓	✓
Internal Light (Static)	✓	✓
Safety Pack (ORC)	—	—
Safety Pack (ISO Pack 1)	Optional	Optional
Safety Pack (ISO Pack 2)	✓	✓
Safety Pack (Solass)	—	—
Thermal Protective Aid (x2)	✓	—
0.5 Litres of water (per person))	✓	—
Warranty (Years)	18	18
Service Intervals	3*	3*
<b>Capacity options</b>		
4 🧑🧑🧑🧑	•	•
6 🧑🧑🧑🧑🧑🧑	•	•
8 🧑🧑🧑🧑🧑🧑🧑🧑	•	•
10 🧑🧑🧑🧑🧑🧑🧑🧑🧑🧑	•	•
12 🧑🧑🧑🧑🧑🧑🧑🧑🧑🧑🧑🧑	•	
14 🧑🧑🧑🧑🧑🧑🧑🧑🧑🧑🧑🧑🧑🧑	•	

\* After 12 years servicing should be annual.



# SeaGo Flares

new



### Parachute rocket

For night time distress signalling purposes on ship, lifeboats, life rafts and for pleasure craft. The launching tube is made of resistant plastic to ensure protection in severe marine weather conditions.

The signal is approved in conformity to the last updating of the normative: SOLAS 74/96 • MED 96/98 EC • Directive 2012|32|EU • IMO Res. MSC. 81 (70) as amended.

Part No.	PARA-ROCKET
Height (mm)	261
Width (mm)	50
Weight (g)	410
Ejection height (m)	300
Burning time (s)	40
Light intensity (cd)	30,000
Expiry	3 Year minimum

### Red hand

For night - time distress signalling purposes on ships, lifeboats, life rafts and for pleasure craft. Tube is made of corrosion-resistant steel with a shockproof plastic handle.

The signal is approved in conformity to the last updating of the normative: SOLAS 74/96 • MED 96/98 EC • Directive 2013|32|EU • IMO Res. MSC. 81 (70) as amended.

Part No.	RED HAND
Height (mm)	235
Width (mm)	25
Weight (g)	200
Ejection height (m)	-
Burning time (s)	> 60
Light intensity (cd)	15,000
Expiry	3 Year minimum



### Floating smoke

For daylight distress signalling purposes on ship, lifeboats, life rafts and for pleasure craft. The case is made of corrosion-resistant steel

The signal is approved in conformity to the last updating of the normative: SOLAS 74/96 • MED 96/98 EC • Directive 2012|32|EU • IMO Res. MSC. 81 (70) as amended.

Part No.	FLOATING – OR
Height (mm)	115
Width (mm)	75
Weight (g)	390
Smoke duration time (s)	180
Expiry	3 Year minimum



### Orange hand smoke

A daylight smoke signal Ideal for personal use on small boats, kayaks, paddle boards and windsurfers. Shockproof plastic tube.

The signal is approved in conformity to the last updating of the normative CE: Directive 2013|29|EU

Part No.	HAND SMOKE – OR
Height (mm)	137
Diameter (mm)	42
Weight (g)	116
Ejection height (m)	-
Burning time (s)	60
Light intensity (cd)	-
Expiry	3 Year minimum



### White hand

Used as a collision flare (signal of sighting) external use only.

The signal is approved in conformity to the last updating of the normative CE: Directive 2013|29|EU

Part No.	WHITE HAND
Height (mm)	235
Width (mm)	25
Weight (g)	200
Ejection height (m)	-
Burning time (s)	> 60
Light intensity (cd)	15,000
Expiry	3 Year minimum



### 2 Star signal

For daylight distress signalling purposes on ships, lifeboats, life rafts and for pleasure craft it's also useful for divers, windsurfers, trekking people and for any other emergency. The case is made of corrosion-resistant plastic waterproof.

The signal is a type approved by ministry of transport and navigation.

Part No.	TWO STAR
Height (mm)	148
Width (mm)	39
Weight (g)	95
Ejection height (m)	80
Burning time (s)	6
Light intensity (cd)	5,000
Expiry	3 Year minimum



### Night & day

A combined day and night signal of sighting. Ideal for personal use on small boats, kayaks, paddle boards and windsurfers. Shockproof plastic tube

The signal is approved in conformity to the last updating of the normative CE: Directive 2013|29|EU

Part No.	NIGHT-DAY
Height (mm)	1385
Diameter (mm)	42
Weight (g)	200
Smoke burning time (s)	20
Flare burning time (s)	20
Light intensity (cd)	15,000
Expiry	3 Year minimum

QTY FLARES IN PACK	Inshore	Aerial	Coastal	Offshore	RORC	MCA
Parachute rocket			2	4	4	4
Red hand	2	2	2	4	4	6
Floating smoke				2	2	2
Orange hand smoke	2	2	2			
White hand					2	
2 Star signal		2				
Day & night						

Water resistant poly bottle available.

**SeaGo Flare disposal service**

Please call the number below for details.

## 3 in 1 Recovery System

The Seago 3 in 1 Recovery system is a compact automatically inflating marker buoy with lifebuoy and recovery strop which is the perfect solution for a man overboard situation. The 3 in 1 Recovery system is the ideal replacement for a traditional foam-filled horseshoe buoy and rigid danbuoy. The 3 in 1 is weighted and has a sea anchor all packed in a neat waterproof container that fits to a pushpit with a simple clamp system provided.

Part number
<b>3in1</b>

1. Danbuoy
2. Lifebuoy
3. Recovery strop

- Neat compact container (mm): H300 x W250 x D130
- Robust stainless steel fittings
- Burst hinge protects container and 3 in 1
- Automatic light
- Oral top-up tube
- Rail mountable storage container
- Rapid deployment setup
- Sea drogue



Rearm using 60g Auto rearming kit

Part number	Kit no.
<b>ARK 60</b>	11



## SB3 Danbuoy

The SB3 inflatable danbuoy is the newest version of our inflatable danbuoy range with a super stable design that ensures even in the strongest winds and roughest sea it will always return to its upright position. The new design uses a ball like base to achieve its stability. The SB3 has an automatic activation meaning when the SB3 is thrown into the water it will inflate. The storage unit that the SB3 comes with is watertight to stop accidental activation.

Part number
<b>SB3</b>

1. Automatic light and flag
2. Stable base
3. Weighted throw bag

- Neat compact container (mm): H300 x W250 x D130
- Robust stainless steel fittings
- Burst hinge protects container and SB3
- Automatic light
- Automatic inflation
- Weighted ball base
- Rapid deployment
- Simple to maintain
- Reusable



Rearm using 60g Auto rearming kit

Part number	Kit no.
<b>ARK 60</b>	11





### Throw bag

Offers a quick and very accessible means to recover a man overboard. The stainless steel holder attaches to a rail with the supplied mounts enabling the throw bag to be rapidly deployed when needed. Weighted bag can be thrown a good distance. Including 30m of bright floating line to grab.

- 30m floating line
- Stainless steel holder
- Weighted throw bag
- Fixing kit

Part number	
<b>THROW</b>	<b>SS</b>



### Rescue sling

The Seago Rescue Sling is easy to use and comes in a waterproof bag with simple instructions printed on the outside in case of emergency use. Rail mountable with Velcro fastening for rapid deployment. The large floating yellow sling has webbing running through it giving it strength. The simple slide adjuster enables the user to secure themselves quickly.

- 30m floating line
- Easy and quick to deploy
- Large floating sling
- Rail mountable
- Slide adjuster on belt
- White or yellow holder available

Part number	
<b>FL</b>	<b>SLING WHITE</b>
<b>FL</b>	<b>SLING YELLOW</b>

### Rigid Danbuoy

The new Seago telescopic Danbuoy complies with RORC and ISAF racing regulations (when extended). Complete with high visibility red and yellow OSCAR man overboard flag and 5 metres of floating yellow safety line. High visibility LED, with multi flash function, test facility and minimum 8hrs run time. Built in weight ballast to keep it upright and a very durable PVC flotation device. Stainless Steel Holder (pushpit mountable) for telescopic Dan-buoy available.

- Telescopic
- RORC and ISAF compliant
- Durable, inflatable float
- Concealed ballast weight
- Bright yellow to attract attention
- High strength fibreglass construction
- Replaceable light
- Five meter floating line included
- Spare light and flag also available



Part number	
<b>ODB</b>	<b>1</b>

Part number	
<b>ODB</b>	<b>H</b>

Stainless steel holder optional

### Horseshoe lifebuoy set

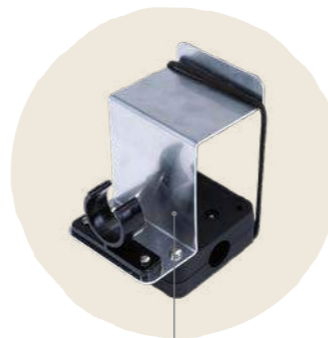
A traditional horseshoe lifebuoy foam filled with wipe clean cover. The horseshoe is available on its own or with a SOLAS approved led light with lithium battery and mounting bracket.

This is the perfect set with highly effective automatic light system. Available in 2 colours.

- Horseshoe lifebuoy
- Automatic SOLAS LED light with lithium battery
- Aluminium mounting bracket
- White or yellow options



Part number	
<b>HS</b>	<b>LB-SET-W</b>
<b>HS</b>	<b>LB-SET-Y</b>
<b>HS</b>	<b>LB-W</b>
<b>HS</b>	<b>LB-Y</b>
<b>HS</b>	<b>LB-LIGHT</b>
<b>HS</b>	<b>LB-DROGUE</b>
<b>HS</b>	<b>LB-BRACKET</b>



# FIXED PRICE SERVICING

## Life raft & recovery

Maritime and Coastguard Agency

**seago**

Maritime and Coastguard Agency

**APPROVED**

An unserviced raft may let you down the only time you need it. Seago prides itself on high quality servicing using experienced personnel and we only use genuine OEM parts. We aim to complete the service in two weeks. To maintain the warranty of your Seago life raft the servicing schedule set out needs to be adhered to – normally every 3 years.

## Clean agent extinguishers

Used to protect machinery/plant and where there is a risk of fire such as in boat/vehicle engine compartments. Ideal for use in sensitive locations and are a suitable option to protect high-value assets such as precious items storage, computing technology and telecommunications facilities. The unit required is determined by the gross volume of that compartment. Only one unit should be installed in any one compartment and should provide the total protection required for that compartment. The compartment should have no unnecessary ventilation that would allow needless loss of suppressant.

### 1kg Clean agent

Part No.	1KG-AUTO-CLEAN
Fire rating	B C
Height	330 mm
Capacity	1 Kg
Cylinder diameter	95 mm inc. bracket
Filled weight	2.1 Kg
Operating temperature	79 °C
Maximum area protected	1.7 m <sup>3</sup>
Working pressure	12 Bar
Duration of discharge	7 Seconds
Temperature range	-30 °C to +60 °C
CE Approved	Yes

### 1.5kg Clean agent

Part No.	1.5KG-AUTO-CLEAN
Fire rating	B C
Height	380 mm
Capacity	1.5 Kg
Cylinder diameter	125 mm inc. bracket
Filled weight	3.1 Kg
Operating temperature	79 °C
Maximum area protected	3.4 m <sup>3</sup>
Working pressure	12 Bar
Duration of discharge	9 Seconds
Temperature range	-30 °C to +60 °C
CE Approved	Yes

### 2kg Clean agent

Part No.	2KG-AUTO-CLEAN
Fire rating	B C
Height	380 mm
Capacity	2 Kg
Cylinder diameter	125 mm inc. bracket
Filled weight	3.6 Kg
Operating temperature	79 °C
Maximum area protected	3.4 m <sup>3</sup>
Working pressure	12 Bar
Duration of discharge	9 Seconds
Temperature range	-30 °C to +60 °C
CE Approved	Yes



## Foam AFFF

Used in industrial and commercial premises, offices, petrol filling stations, chemical paint houses, boats, lorries. Also very effective on fires caused by the combustion of flammable liquids and materials that liquefy such as plastic, oils, greases, paints, tar... Safe, if used in error, on live electrical equipment, since the spray is non-conductive and complies with dielectric test to EN3-7 clause 9. (Model tested to the BS EN3 35,000V dielectric test as defined by BSEN3-7:2004 + A1:2007).

### 6kg Foam AFFF

Part No.	6L-AFFF-FOAM
Fire rating	A B C (13A / 144B)
Height	550 mm
Capacity	6 Kg
Cylinder diameter	220 mm
Filled weight	10.4 Kg
Operating temperature	20 °C
Working pressure	12 Bar
Discharge range	5 m
Duration of discharge	30 Seconds
Temperature range	-20 °C to +60 °C
CE Approved	Yes



## Dry powder extinguishers

Products Kitemarked and Certified by DNV to MED "Ships Wheel" - meets the recommendations of the Royal Yachting Association and the requirements of the environmental Authority / British Waterways Board Joint Boat Safety Scheme. Ideal for use in vehicles, caravans, boats, agricultural machinery, farms, garages, in the home, offices, and for a wide range of industrial and commercial applications.



### 1kg Dry powder - manual

Part No.	1KG-DP
Fire rating	A B C (5A/34B)
Height	364 mm
Capacity	1 Kg
Cylinder diameter	130 mm
Filled weight	2.12 Kg
Operating temperature	20 °C
Discharge range	4 m
Working pressure	14 Bar
Minimum burst pressure	55 Bar
Duration of discharge	7 Seconds
Temperature range	-30 °C to +60 °C
CE Approved	Yes
DNV & MED (Ships Wheel)	Yes

### 2kg Dry powder - manual

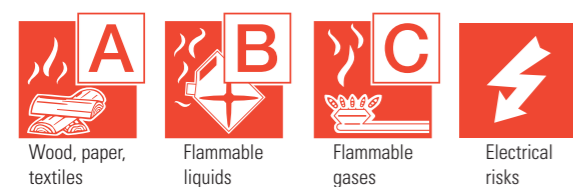
Part No.	2KG-DP
Fire rating	A B C (5A/34B)
Height	380mm
Capacity	2 Kg
Cylinder diameter	140 mm
Filled weight	3.65 Kg
Operating temperature	20 °C
Discharge range	5 m
Working pressure	14 Bar
Minimum burst pressure	55 Bar
Duration of discharge	15 Seconds
Temperature range	-30 °C to +60 °C
CE Approved	Yes
DNV & MED (Ships Wheel)	Yes

### 1kg Dry powder - automatic

Part No.	1KG-AUTO-DP
Fire rating	A B C
Height	330 mm
Capacity	1 Kg
Cylinder diameter	80 mm
Filled weight	2.1 Kg
Operating temperature	20 °C
Maximum area protected	1 m <sup>2</sup>
Working pressure	12 Bar
Duration of discharge	7 Seconds
Temperature range	-20 °C to +60 °C
CE Approved	Yes

### 2kg Dry powder - automatic

Part No.	2KG-AUTO-DP
Fire rating	A B C
Height	380 mm
Capacity	2 Kg
Cylinder diameter	80 mm
Filled weight	3.6 Kg
Operating temperature	20 °C
Maximum area protected	2 m <sup>2</sup>
Working pressure	12 Bar
Duration of discharge	7 Seconds
Temperature range	-20 °C to +60 °C
CE Approved	Yes



## 0.6kg Dry powder compact aerosol

These 0.60 kg & 0.95 kg BC Powder Fire Extinguishers are designed for use in all types of motor vehicles, caravans and most areas around the home. Suitable for B and C class fires caused by: petrol (lead or unleaded), diesel, oil, gas, paints, solvents, greases, and also fires involving electrical equipment, and gaseous fires.

Part No.	AEROSOL-0.6KG
Fire rating	B C (21B)
Height	281 mm
Capacity	0.6 Kg
Cylinder diameter	94 mm
Filled weight	0.76 Kg
Working pressure	18 Bar
Discharge range	2-3 m
Duration of discharge	6 Seconds
Temperature range	-20 °C to +60 °C
CE Approved	Yes



## Using an extinguisher

Whatever fire extinguisher you are using you need to use the P.A.S.S. method to ensure it goes out. P.A.S.S. is the acronym for:

- **Pull** – remove the the safety pin or tag. Once this is out the extinguisher should be ready to go.
- **Aim** – always aim at the base of the fire. Extinguishers work by breaking what is known as the fire triangle. You probably remember it from school. For combustion to take place you need fuel, oxygen and heat. If you aim at the flames, rather than the source of the flames, the extinguisher will not break the chemical reaction. So, aim at the base of the flames where the fuel is feeding the fire.
- **Squeeze** – squeeze the trigger slowly and steadily until the extinguisher starts to work.
- **Sweep** – sweep the extinguisher back and forth over the base of the flames until the fire is out.

*“A boat is nothing  
without water and  
man without his  
dreams”*

*Mehmet Murat ildan*

## Inflatable *Tenders*

### *HYP boat range*

The Seago HYP boats are robust and durable made from 1100 decitex Orca fabric. These boats have excellent UV resistance and will last longer in hot climates. All HYP boats come as standard with the following features:

- Lifting points for use with davits
- Fully adjustable seat position (wooden thwart included)
- Padded seat with removable water-resistant storage
- Aluminium 2-piece oars
- Fabric grab handles along tubes
- Stainless steel towing eyes
- Carry handles
- Inflatable floor with keel
- Repair kit
- Foot pump
- Carry bag

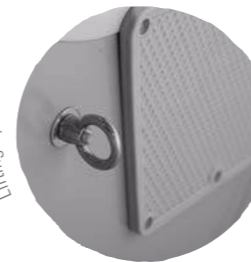
Part number	Max kg	Max kw	Max hp	Max person	Packed size (cm)	N.W kg	Floor type (Inflatable or slatted)	Keel (Y/N)
HYP-300	478	7.5	10	4	111x63x40	40	Inf	Y
HYP-270	436	7.5	10	3.5	111x63x38	36	Inf	Y
HYP-240	350	3.0	4	2	101x61x38	33	Inf	Y



D ring lifting points



Carry handles



Lifting eye



Premium rowlock



- The HYP and Spirit ranges includes a padded seat and detachable storage bag kit



*Scan for HYP  
range technical  
drawings*

## Spirit boat range

The Spirit boats are constructed from 1100 decitex 1100g high grade PVC fabric in a stylish 2 tone design. All Spirit boats have large tubes with domed sponsons for stability. These boats are tough and well designed offering excellent specification and value. All Spirit boats feature:

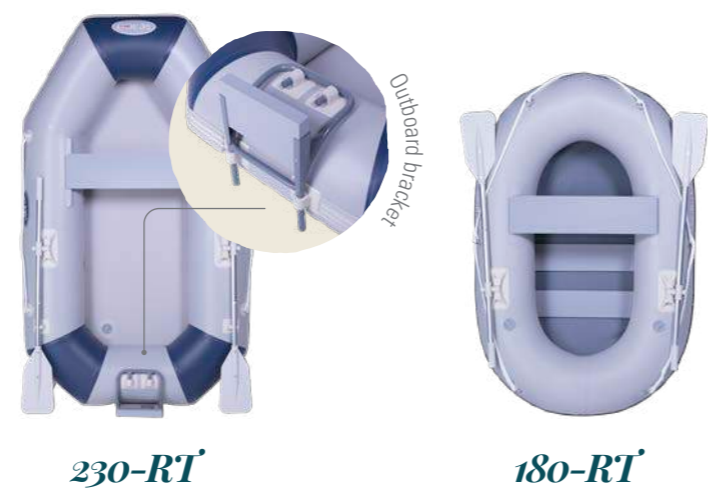
- Fully adjustable seat position (wooden thwart included)
- Padded seat with removable water-resistant storage\*
- Aluminium 2-piece oars
- Fabric grab handles along tubes
- Stainless steel towing eyes
- Anti-wash rubbing strake
- Carry handles
- Repair kit
- Foot pump
- Carry bag

\*Not included with RT models

Part number	Max kg	Max kw	Max hp	Max person	Packed size (cm)	N.W kg	Floor type (Inflatable or slatted)	Keel (Y/N)
320Spirit-adk	511	11.2	15	4.5	111x63x42	40	Inf	Y
290Spirit-adk	458	7.5	10	4	111x63x40	38	Inf	Y
270Spirit-adk	436	7.5	10	3.5	111x63x38	35	Inf	Y
240Spirit-adk	350	3	4	2	101x61x38	32	Inf	Y
240Spirit-SL	350	3	4	2	101x61x38	29	Slat	N
230-RT	350	2.2	3	2	101x58x35	28	Slat	N
180-RT	200	na	na	1.5	86x43x32	19	Slat	N



320



230-RT

180-RT

## Go Lite boat range

The new super lightweight Go Lite boats are made for those needing a boat that packs away small, is light and easy to handle. The Go Lites are made from 1100 decitex 850g PVC fabric with integrated air floor, lightweight transom and short sponson, which make these boats super light for the size and capacity. These great looking boats also offer these features:

- Fully adjustable seat position
- Aluminium seat
- Integrated air floor
- Lightweight transom
- Aluminium 2-piece oars
- Rope grab lines
- Stainless steel towing eyes
- Rubber rubbing strake
- Repair kit
- Foot pump
- Carry bag also a back pack.

Part number	Max kg	Max kw	Max hp	Max person	Packed size (cm)	N.W kg	Floor type (Inflatable or slatted)	Keel (Y/N)
270Go-lite	484	4.3	6	3.5	99x49x32	23	Inf	N
250Go-lite	400	3.9	5	3	99x49x32	21	Inf	N
230Go-lite	350	3.0	4	2	91x46x33	18	Inf	N



## New AF boat range

The AF tenders are a lightweight tender with an inflatable floor sporting classic shape stern tube design. This lightweight tender gives enough room for two/three people (depending on model) and up to a 7hp engine. The new styling of a classic shaped tender is perfect for lighter use and compact enough to store easily.

Made from 1100 Decitex 850g PVC giving strength while keeping the weight down

- Fully adjustable seat position (wooden thwart included)
- Aluminium 2-piece oars
- Rope grab line
- Stainless steel towing eyes
- Rubber rubbing strake
- Repair kit
- Foot pump
- Carry bag

Part number	Max kg	Max kw	Max hp	Max per-son	Packed size (cm)	N.W kg	Floor type (Inflatable or slatted)	Keel (Y/N)
260-AF	450	4.4	6	3	111x64x32	30	Inflatable	N
230-AF	350	3	4	2	111x60x31	25	Inflatable	N



- Every Seago boat comes with a pump, repair kit and valve spanner.

## SL boat range

The SL boats are designed to offer those needing an entry level tender for lighter use. These boats are constructed from 1100 decitex 850g PVC fabric making them lighter weight than the Spirit range. The SL boats have a traditional shape with great looks and enough features for an entry level boat:

- Fully adjustable seat position (wooden thwart included)
- Aluminium 2-piece oars
- Rope grab line
- Stainless steel towing eyes
- Rubber rubbing strake
- Repair kit
- Foot pump
- Carry bag

Part number	Max kg	Max kw	Max hp	Max per-son	Packed size (cm)	N.W kg	Floor type (Inflatable or slatted)	Keel (Y/N)
260-SL	450	4.4	6	3	111x64x32	33	Slat	N
230-SL	350	3	4	2	111x60x31	38	Slat	N



- Every Seago boat comes with a pump, repair kit and valve spanner.



- Straps
- Elasticated
- UV resistant and lightweight
- Prolongs boat life and reduces maintenance

## Tender cover

The brand new Seago tender cover provides extra protection for your inflatable tender. Lined with a UV protective layer, these semi-tailored covers offer a tight elastic trim and polyester strapping which snugly fit to your tender. To properly care for your inflatable this is a must have accessory.

UV rays and heat are the biggest contributors to shortening the lifecycle of your tender.

Part number	Boat size (m)
BC SML	1.8-2.6
BC LRG	2.7-3.2



## Carry bag

Comes in two sizes. Large size fits boats from 2.6m - 3.2m and the small size fits boats from 1.2m - 2.4m. Made from durable polyester with polyester webbing the large zip opening allows the bag to split in half making it extremely simple to get the rolled boat into the bag. Strong carry handles help transportation.

- Strong carry handles
- Wide opening for easy fit
- Two sizes
- Large, easy-glide, dual zips

Part number
CARRY BAGLRG
CARRY BAGSML

## Seat bag

The perfect accessory for your tender, adding comfort and storage. The padded seat cover is adjustable and fits all inflatable tenders. The storage bag attaches with a strong zip. The water resistant storage area has a large opening. When you disembark from your tender you can also take this section of the seat with you using the carry strap.

- Water resistant
- Adjustable to all inflatable tenders
- Large storage area
- Detachable bag
- Carry straps

Part number
SEAT BAG



## Dolly wheel

Easily manoeuvre your tender over ground, single handed, making light work of moving the dinghy from A-B. Made from robust ABS plastic with a 316 stainless steel axle and spring. Three adjustment positions and easily fitted to transom using provided kit.

Hyalon	S 320	S290	S270	S240 ADK	S240	260SL	230SL	230RT	180RT	GoLite
✓	✓	✓	✓	✓	✓	✓	✓	—	—	✓

Part number
DW
DW BRKT

- Manoeuvre single handed
- Strong ABS plastic
- Stainless steel axle
- Adjustment positions
- Easy to fit
- Includes fixing kit



\* Optional bracket

## Outboard bracket

A well priced, anodised aluminium outboard bracket with laminated wooden pad.

- Suitable for outboards up to 15Hp/20kg
- Pad Size: 178mm x 224mm
- Height of lift: 355mm
- Attaches to transom by 4 bolts (not supplied)

Part number
OB- ALU



# Paddle boards & kayaks

for your adventure



Photo: Nikola Radojcic for Unsplash

## Paddle boards

Everything you need to get on the water and start your new adventure. There's a whole new world out there waiting for you. Use on oceans, lakes, rivers and bays. Stand up paddle boarding is a great form of exercise, fun for all the family and is an excellent entry point to get involved in watersports. Where will you go next?

- Drop stitched fabric
- Luggage straps
- Large EVA deckpad
- Carry handle
- Leash anchor point
- 10'6" (320mm x 82mm x 150mm)

Part no.
PB-GUIDE
PB-FREERIDE
PB-SIROCCO
PB-PAMPERO

These paddleboards have been designed to give the very best all-round experience for any level or rider. The specific shapes have been carefully crafted to enable a low centre of gravity while on the water.

The Pampero and Sirocco have an extra large EVA deck for the ultimate grip combined with the 82cm width and 12.5cm thickness to reduce sideways wobble make these boards extremely stable.

The low profile not only adds stability and stiffness but also reduces weight, makes it easier to carry and faster to inflate with up to 20% less effort required.

The Sirocco and Pampero Air Flow boards are built using high-tech Fusion drop stitched fabric. Fusion fabric is a dual woven layer fabric with plastic coating making them durable and tough. The Fusion fabric has fully printed graphics giving these premium boards the style they deserve.



## Get on the water pack

- Each SeaGo paddle board comes with:
- Ventilated carry bag with rucksack straps
  - Lightweight, adjustable paddle
  - High pressure pump with gauge
  - High strength, coiled leash with Velcro strap
  - Repair kit and removable
  - High-density fin that attaches without tools.





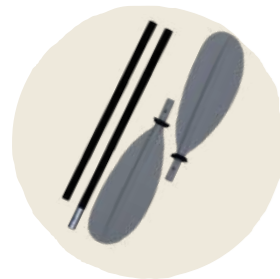
## Inflatable kayak range

Following on from the well received inflatable kayaks last year Seago have added a new model to the range, the Toronto. The Vancouver and Quebec have been redesigned with all of the latest features of the Toronto. The kayak tubes are made from high grade 1100 Decitex reinforced fabric with plastic coating. The fabric is tough enough to gain class IV white water rating. The dual layer drop stitched floor allows for high pressure inflation giving rigidity. Seago inflatable kayaks perform like a hard moulded kayak.

Part number	Max person	Max load (kg)	Length (cm)	Width (cm)	Interior (cm)	N.W (kg)	Chambers
Kayak-tor	3	388	420	105	406 x 38	20	3
Kayak-van	2	340	385	105	358 x 38	15.8	3
Kayak-que	1	280	305	105	267 x 41	12	3

### Key features:

- Durable 1000 denier fabric
- Stainless steel fittings
- Memory foam contoured seat
- Detachable storage
- Shock cord luggage holder
- 4 Piece paddle
- Tough removable fin



Quebec comes complete with:

- ISO 6185-2 (compliant standard)
- 1 x Dual blade paddles
- High pressure foot pump
- 1 x Padded seats
- 1 x Paddle leashes
- Tough removable fin
- Carry bag
- Repair kit



Quebec comes complete with:

- ISO 6185-2 (compliant standard)
- 2 x Dual blade paddles
- High pressure foot pump
- 2 x Padded seats
- 2 x Paddle leashes
- Tough removable fin
- Carry bag
- Repair kit



Quebec comes complete with:

- ISO 6185-2 (compliant standard)
- 3 x Dual blade paddles
- High pressure foot pump
- 3 x Padded seats
- 3 x Paddle leashes
- Tough removable fin
- Carry bag
- Repair kit

new  
Design



### Take your next adventure to another level

Explore areas you have never been able to reach with family and friends. Seago kayaks are built for the adventurer within you.



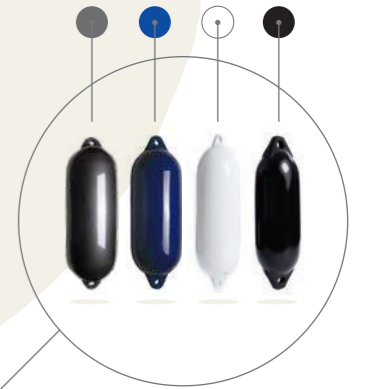
Elegant, multipurpose  
***Fenders***

***Star fender***

Star fenders and Solid round buoy fenders are manufactured using the rotation moulded process which eliminates all seams, ensuring greater strength even under extreme pressure. Minimum maintenance required. With proper use the fenders will provide protection for many years.



- Best seller
- Long lasting
- Robust material
- In Anthracite, navy, white, black & white/blue



Part no.	Dia x height (cm)	Weight (kg)	Volume (L)
F001	12 x 45	0.7	4
F002	15 x 58	1.1	8
F003	21 x 62	1.8	18
F004	24 x 70	2.4	27
F005	30 x 90	4.0	56



***Fender lanyards***

Seago fender lanyards are the perfect way to hang your fenders alongside your boat. The lanyards are 2 metres long with a pre spliced eye at one end to make life simple. Come in packs of two. Available in three colours, white, navy, black

- 2m long
- Pre-spliced eye
- 3-strand polyester construction
- Braided polyester
- Come in packs of two



3 Strand lanyard
511/08-2-N
511/08-2-W
511/08-2-B

Braided lanyard
DB/08-2-N
DB/08-2-W
DB/08-2-B

***Solid head round buoy***

- Long lasting
- Robust material
- Minimum maintenance
- Available in: black, navy or white/blue



Part no.	Dia x height (cm)	Weight (kg)	Volume (L)
FRB30	35 x 48	1.5	21
FRB40	45 x 62	2.8	45
FRB50	55 x 73	3.8	83
FRB60	65 x 88	4.9	139

Part number
FRB 30WB
FRB 30BK
FRB 30N

Part number
FRB 40WB
FRB 40BK
FRB 40N

Part number
FRB 50WB
FRB 50BK
FRB 50N

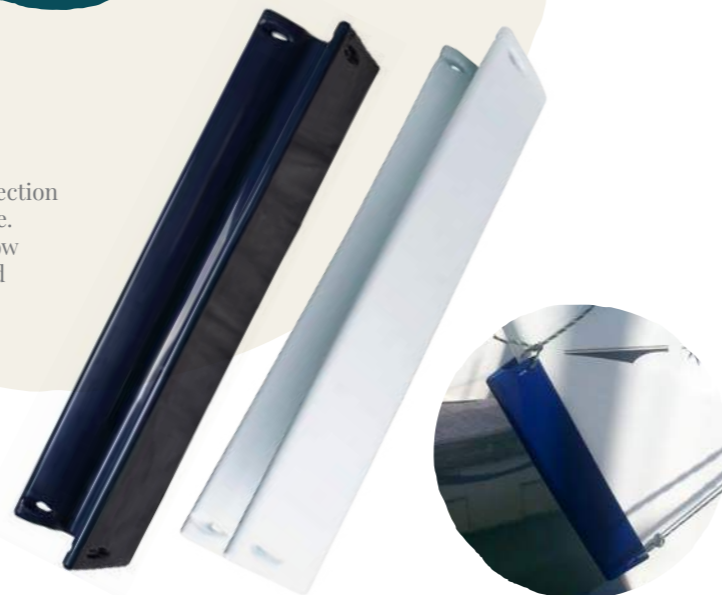
Part number
FRB 60WB
FRB 60BK
FRB 60N

## Bow fender

The Majoni bow fender is designed to offer maximum protection to the bow of your boat while looking as discreet as possible. The bow fender is available in white or navy. The Majoni bow fender attaches to the boat using ropes through the top and bottom section of the fender.

- Discreet compact design
- Maximum coverage of bow
- Easy installation
- Available in white, navy or black

Part no.	Size (cm)	Weight (kg)
BOWFEN WHITE	60 x 14	1.8
BOWFEN NAVY	60 x 14	1.8
BOWFEN BLACK	60 x 14	1.8



## Step fenders

The step fender can be used as a fender and a ladder. Made from top quality, robust, coated PVC, this fender ladder will protect your boat, whilst enabling easier boarding and disembarking.

- UV protected
- Easy attachment
- Highly weight-bearing
- Available in navy or white

Part no.	Dia x height (cm)	Weight (kg)
1-STEP	36x 12 x 36	3
2-STEP	25 x 12 x 55	3.6
3-STEP	25 x 12 x 75	4
4-STEP	25 x 12 x 95	5



Part number
1-STEP NAVY
1-STEP WHITE

Part number
2-STEP NAVY
2-STEP WHITE

Part number
3-STEP NAVY
3-STEP WHITE

Part number
4-STEP NAVY
4-STEP WHITE

## Bow buoy

The Majoni Bow Buoy is the traditional style fender to minimise damage to the boat bow. It also limits the damage caused if you collide with another boat.

- Available navy and white

Part no.	Size	Measurements (cm)	Weight (kg)
BOWBUOY LN	Large	52 (a) 41 (b) 37 (c) 51 (d)	1.8
BOWBUOY LW	Small	33 (a) 26 (b) 27 (c) 24 (d)	0.9



## Dock wheel

The Dock Wheel is easy to fit to any dock corner and adds protection to the hull of your boat. On impact the wheel will roll across the hull of your boat, avoiding impact and marks that a standard corner fender may cause.

- Strong ABS mounts
- Guides boat into mooring position
- Non-marking

Part no.	Size (cm)
DOCK WHEEL	30 x 15



## Block fender

A simple way to protect your boat from damage caused when mooring. The Block fender fixes firmly to the side of the jetty or pontoon and acts as a barrier.

- Simple to attach
- Slim profile
- Align several to create larger barrier

Part no.	Size (cm)
BLOCK 1	100 x 12 x 7



## Dock fenders

To protect your boat from the marine berth. A 3/4 round bumper dock fender made from robust UV protected PVC, it can be bolted or screwed onto the pontoon.

- UV protected
- Flexible uses
- Heavy duty impact resistance
- Burst resistant

Part no.	Dia x height (cm)	Weight (kg)
DOCK-1	100 x 19 x 19	3.6
DOCK-2	100 x 24 x 24	6



Part number
DOCK 2

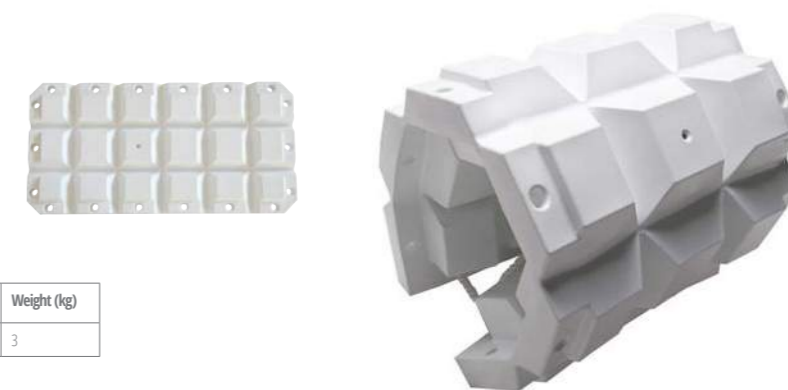
Part number
DOCK 1

## Multi fender

The Multi fender gets the name from the many ways it can be used. This fender can be hung from the side of a boat, wrapped around posts or awkward areas in a harbour or docking bay. It's strong, robust and versatile.

- Multi purpose
- Highly flexible
- Join many together for bespoke protection

Part number	Dia x height (cm)	Weight (kg)
MULTI 1	60 x 30 x 8	3





Ultra-high grade PVC, tough non inflatable fender for canal boats. Slim flat and cylindrical designs reduce boat profile. Designed to offer maximum protection without increasing the overall beam of your boat. These canal fenders have a small diameter to allow you to squeeze through tight locks and along canals. They also feature a reinforced eye for hanging and are manufactured from a specially developed harder material designed for use with steel boats. Available in black and navy.

new

### Flat fender

- UV protected
- Two colour options
- Protection in locks and mooring
- Suitable for 8mm Seago lanyard

Part no.	Dia x height (cm)	Weight (kg)
FLAT-BK	45 x 12 x 6	1.2
FLAT-N	45 x 12 x 6	1.2



Front and side

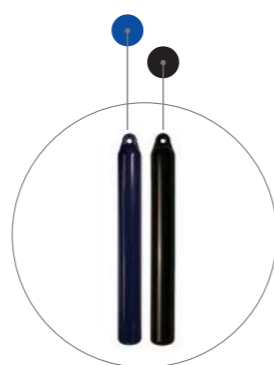


### Slim fender

- UV protected
- Two colour options
- Protection in locks and mooring
- Suitable for 8mm Seago lanyard

Part no.	Dia x height (cm)	Weight (kg)
Slim-BK	43 x 5	0.46
Slim-N	43 x 5	0.46

new



### Rod mooring buoy

Ideal for anchoring and mooring with a highly visible, orange, soft PVC surface which will not harm your boat. The rod is galvanised with a swivelling eye on the bottom and a fixed eye on the top to make picking it up easy.

- Long lasting
- Robust material
- Minimum maintenance

Part no.	Dia x height (cm)	Weight (kg)	Volume (L)
RB30	30 x 60	3	11
RB40	40 x 80	4.5	29
RB50	50 x 90	5.5	60
RB60	60 x 100	7	106



Part number	RB 60
-------------	-------

Part number	RB 50
-------------	-------

Part number	RB 40
-------------	-------

Part number	RB 30
-------------	-------

new

### Pick-up buoys

The Pick-up Buoy is a really useful extra as a mooring aid. Tested and designed to aid retrieval by hand or boat hook.

- Easy grab handle for safe retrieval
- Reinforced eye assures strong attachment
- Bright and highly visual
- Manufactured from marine grade UV resistant PVC
- Available in orange

Part no.	Size (cm / length)
FOOPB 1 OR	34
FOOPB 2 OR	40



### Heavy duty bucket

A versatile marine grade vinyl bucket which won't mark or scratch your boat. Durable, strong and flexible in a choice of three colours. 7 litre capacity, 26cm diameter.

Part no.	Colour	Capacity (L)	Diameter (cm)
BKTO	Orange	7	26
BKTG	Grey	7	26
BKTB	Blue	7	26



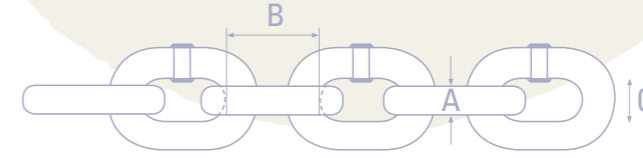
Seago Yachting Chain is quality controlled at manufacture and prior to dispatch in order to ensure the dimensions and ISO- galvanisation meets the required standards. Using ultrasonic equipment Seago can ensure consistent quality.



# Wire & chain

## Calibrated chain

Seago has an extensive range of chain sizes for marine use in both galvanised and stainless steel, made to DIN 766 or ISO standard depending on diameter. All Seago chain conforms to the required hot dipped galvanised **ISO-1461**.



Product number	Description	Dim a (mm)	Dim b (mm)	Dim c (mm)	Break load (kg)	Weight per m (kg)	Grade
CH 06SS	6mm Din 766	6	18.5	8	1600	0.78	40
CH 06G40					2000		
CH 08SS	8mm Din 766	8	24	12	3000	1.4	40
CH 08G40					4000		
CH 10G40	10mm Din 766	10	28	14	5000	2.2	40
CH 10ISO	10mm EN818-3	10	30	15	6400	2.2	40
CH 10ISOSS							
CH 12G40	12mm DIN 766	12	36	16	7400	3.2	40

- Galvanised
- DIN 766 / ISO
- 316 Stainless steel
- Chain buckets available

Rope to chain splices available on request.

## KOS wire

The most respected wire in the marine industry. Made from highest quality 316 grade stainless steel, carefully manufactured to stay bright, clean and strong. Seago PVC coated wire is also manufactured by KOS. It is high grade wire coated in bright white PVC. Available in 4-6mm and 5-8mm.

- Corrosion resistant in extreme weather
- Elegant surface brightness
- Ultrasonic cleaning
- Kosform compact strand has superior breaking strength and greater durability
- COC available

1x19 Wire					
Product number	Diameter (mm)	Weight kg/100m	Min breaking load		
			kN	kg	
SW19 02	2	1.95	3.14	320	
SW19 025	2.5	3.1	4.90	500	
SW19 03	3	4.5	7.06	720	
SW19 04	4	8.03	12.60	1285	
SW19 05	5	12.57	19.71	2010	
SW19 06	6	18.03	28.22	2878	
SW19 07	7	24.8	34.82	3551	
SW19 08	8	31.8	45.52	4642	
SW19 10	10	50	71.15	7255	
SW19 12	12	72.1	102.07	10408	
SW19 14	14	97.1	139.00	14170	
SW19 16	16	128.3	182.00	18560	

KOSFORM 1x7					
Product number	Diameter (mm)	Weight kg/100m	Min breaking load		
			kN	kg	
KF71 025	2.5	3.55	6.77	690	
KF71 03	3	5.5	9.81	1000	
KF71 04	4	9.75	17.46	1780	

PVC coated WHITE					
Product number	Diameter (mm)	Weight kg/100m	Min breaking load		
			kN	kg	
PVCW 46	4-6	8.03	13.19	1345	
PVCW 58	5-8	12.56	20.60	2101	

7x19 wire					
Product number	Diameter (mm)	Weight kg/100m	Min breaking load		
			kN	kg	
SW719 02	2	1.7	2.22	226	
SW719 025	2.5	2.6	3.47	354	
SW719 03	3	3.95	5.00	510	
SW719 04	4	7.05	8.89	907	
SW719 05	5	10.35	13.91	1418	
SW719 06	6	15.05	20.02	2041	
SW719 08	8	26.2	35.63	3633	

KOSFORM 1x19					
Product number	Diameter (mm)	Weight kg/100m	Min breaking load		
			kN	kg	
KF119 05	5	14.95	23.93	2440	
KF119 06	6	21.8	34.81	3550	
KF119 07	7	29.05	48.15	4910	
KF119 08	8	38.1	60.31	6150	
KF119 10	10	59.85	95.81	9770	
KF119 12	12	81	141.22	14400	





multi-purpose  
**Accessories**

### Staydry 50l dry bag

The new **50 litre dry bag**, in high visibility yellow combined with stylish graphite, is the ideal sailing companion. The bag has plenty of room for clothing and all those important safety essentials you do not want to get wet. The roll-down top can be used to adjust the size of the bag and is also a carry handle once fastened.

It comes with a nylon D-ring and a carbine hook to attach keys or a waterproof mag light. The bag is complete with an adjustable shoulder strap.

- Fully waterproof
- High visibility neon yellow
- Adjustable roll-down top
- Shoulder strap
- Carbine hook
- Durable material

Part number	Capacity (L)
DB-50-NY	50



Ventilation

### Lifejacket bag

High visibility tough, bright PVC with a mesh vent to allow the lifejackets to breathe and dry. The bag can comfortably hold 6 adult lifejackets. The dual zip wide opening top makes getting the lifejackets in and out simple. Features hard wearing rails protecting the fabric.

Part number	Capacity
LJBAG Seago-NY	6 Jackets

- High-vis neon yellow
- Tough PVC
- Side pocket
- ID card holder
- Top and side carry handles





## Binocular

The Seago **BM750C** is a lightweight heavy duty binocular incorporating a compass and range finder. Waterproof to JIS7 standards means it is sealed against water ingress in 1 metre of water for 30 minutes. The binoculars float if dropped overboard and come in a durable protective carry case.

- Floating
- Magnification: 7x
- Objective lens dia: 50mm
- Focus: Individual eye focus (dioptr control)
- Field angle: 7.5°
- Exit pupil: 6.8mm
- Eye relief: 23mm
- Prism type: Porro BAK-4
- Field of view: 132m at 1000m
- Rangefinder: Reticle
- Compass zone B \*\*
- Lens coating: Multi coating
- Housing: Rubber

Part no.	Weight (g)	Dims (cm)
BM750C	890	20 x 8 x 15

\*\* COMPASS ZONE B: Areas between 40° North latitude and 60° North latitude

best seller

Floats in water

## Majoni keyring

Never lose those all important keys overboard again. With this floating keyring, in the shape of buoy or fender, you can set to sea with peace of mind and know you'll be able to start the car when you get back to shore. Buoyant with **one** key attached.

Part no.	Colour
KEY FENW	White
KEY FENOR	Orange
KEY BYOR	Orange



## ecodry desiccant dehumidifier

The ecodry is specifically designed for boats and marine applications with the environment in mind. The ecodry desiccant dehumidifier has no harmful gases and no compressor making this compact machine highly efficient and economic. The ecodry can be used at home, in the garage, holiday home or caravan to ensure that the space remains dry and free from harmful mould.

The ecodry is simple to operate with a clear display showing you everything you need to know at a glance. Once the desired humidity is set ecodry is fully automated. Capable of continuous operation (ideal for boats) the ecodry will stay set. Auto restart ensures the ecodry comes back online with the last settings in the event of a power outage.



MODEL	DD9-ECO
CAPACITY	7L/day (20°C, 60%RH)
VOLTAGE	220-240v 50Hz
WATTAGE	610W @ 230V
WORKING ENVIRONMENT	1°C - 40°C
WATER TANK	2 Litre
NET WEIGHT	6kg

- 7 Litre per day (maximum capacity)
- Working temperature 1-40°C
- Automatic louvre for directing airflow
- Low noise level (42db)
- Continuous drain

Part no.	Weight (kg)	Dims (mm)
DD9-ECO	6	487 x 320 x 200

## First aid kits

The Seago **'Category C'** first aid kit can be used as part of a **'SOLAS B'** pack or as a must have emergency pack on your boat. Category C first aid kits are compulsory on coded/fishing vessels. Complies with European Directive EC 92/29 EEC Conforms to the International Convention for Safety of Life at Sea 1974 and MSN 1768 (M+F) Vessels (Medical Stores) as amended to date.

- Hard case or soft pack
- Use as part of SOLAS B pack
- Make sure yours is up to date and complete before every trip



Part no.
FAK HC



Part no.
FAK SP

Dressings & plasters	Qty
Sterile Wound Cleansing Wipes (pck)	1
Pocket Face Mask with Valve	1
Gloves Powder-Free Pair	5
Safety Pins	6
Scissors	1
Adhesive Elastic Bandage	1
Triangular Bandage	4
Plastic Burn Bag	1
First Aid Instructions (Waterproof)	1

Dressings & plasters	Qty
Plasters Asst Wash proof	20
Medium Dressings	2
Large Dressings	2
Extra Large Dressings	1
Skin Closure Strips	6
Sterile Gauze Swabs	5
Paraffin Gauze	10

Medicine	Type	Per unit (mg)	Qty
Glyceril Trinitrate Spray	Spray	400	1
Avomine	Tablets	25	60
Loperamide	Tablets	2	30
Paracetamol	Tablets	500	48
Ibuprofen	Tablets	400	48
Cetrimide Antiseptic	Cream		1



Free book with hard case kit (RRP £10.99)



## Dock lines

A convenient pre-spliced dock line with 30cm eye one end made from a soft double braid polyester giving plenty of stretch and strength. The lines offer high UV and abrasion resistance. Available in two colours navy or white in a selection of sizes.

- Double braided Polyester
- Spliced 30cm eye
- 3 Colours: Navy, White, Back or silver

Part number	Diameter (cm)	Length (m)
DL-W 10-8	10	8
DL-N 10-8		
DL-BK 10-8		
DL-W 12-10	12	10
DL-N 12-10		
DL-BK 12-10		
DL-W 14-10	14	10
DL-N 14-10		
DL-BK 14-10		
DL-W 14-15	14	15
DL-N 14-15		
DL-BK 14-15		
DL-W 16-15	16	15
DL-N 16-15		
DL-BK 16-15		



*Now available in silver*

## Oil extractor

The Seago EXTRACT-IT pump is the perfect solution to vacuum fluids from the most difficult areas. Can be used on boats, cars, motorcycles or anything with an engine. Also the ideal tool to remove bilge water from boats or water trapped in plumbing systems.

- Oil changes with no fuss and no mess
- 6 Litre capacity
- Easy to read measurements
- Removable pump for easy storage
- Funnel for mess free emptying
- 10-20 Strokes creates powerful vacuum
- Long tube for maximum versatility

Contents	Qty
Pump handle	1
Container	1
Clear tube with cut off	1
Funnel	1

Part no.
SEA6



- NOT suitable for flammable liquids, solvents, alkalis, dangerous chemicals, poisons or acids

## Transfer pump

Ideal for a many applications: household plumbing, motor vehicles, aquariums and spillages. No wires or charging units means it's extremely portable and light weight. Only 2 x size D batteries are needed. Yet it pumps up to 5 litres of liquid per minute, draining the bilge of a boat or changing your aquarium water quickly & cleanly.

- Battery operated
- Extremely portable
- Powerful motor
- Fast transfer
- Works for most liquids

Part no.
SEA-3V

- NOT suitable for flammable liquids, solvents, alkalis, dangerous chemicals, poisons or acids



## Partnerships

At Seago our relationships with suppliers are founded on trust and friendship. As a result they tend to stand the test of time. The result is better for our shared customers. We're proud to have been building these friendships for decades.



We've worked closely with LIROS for more than 40 years. Both companies are family owned and share many values. This has led to the closest of relationships which in turn has allowed us to extend UK access to these extraordinary ropes.

LIROS is recognised as a world leader in the manufacture of high tech yachting ropes, kitesurf cords, paragliding lines and a wide range of industrial cordage. With the new factory LIROS continue to manufacture in Germany in order that they can control every part of the production from start to finish. The factory is 10.000 square metres and has been laid out using the most modern flow systems which ensure maximum efficiency allowing LIROS to maintain its competitive position in the world of rope manufacturing.

*LIROS is certified and approved according to DIN EN ISO 9001 and DIN EN ISO 14001. Production 100% Made in Germany.*



Seago and Majoni have been working together for over 30 years. Both companies are family owned and run. Seago work closely on product development with Majoni to ensure demands are met for our customers across the UK and beyond.

In 1952 Majoni invented the plastic soccer ball, the right ingredients for a strong flexible material and a new way to produce plastic hollow products with a rotational moulding technique. This technique, together with flexible strong material was used to developed several products like fenders and buoys.

Majoni offers a wide variety of high quality fenders and buoys produced in the Netherlands. Their focus is top quality products at a low price.

- Fenders
- Dock fenders
- Floats
- Buoys
- Customised products

*With their knowledge and experience they develop products of very high quality and longevity.*



# seago<sup>®</sup>

— Equip for *adventure* —

+44 (0) 1825 873567

[sales@seagogroup.com](mailto:sales@seagogroup.com)  
[seagogroup.com](http://seagogroup.com)

