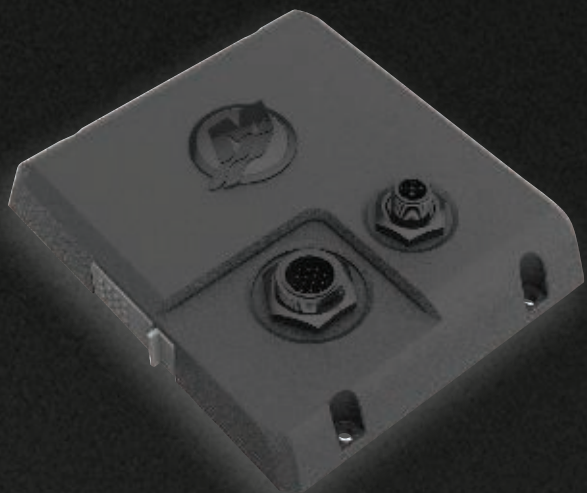


# Engine data linked to your vessel display. Welcome to VesselView Link by Mercury Marine®.



## VesselView Link

- Offered as a single engine or multi engine (2-4 engine) interface, a “black box” VesselView that installs under the dash
- Can also Link a Simrad or Lowrance compatible display to the Mercury SmartCraft data and control system which provides the fully integrated and functional Mercury VesselView user interface on those displays
- Simrad NSS evo2, NSS evo3, NSO evo2, NSO evo3 and GO series; Lowrance HDS Gen2 Touch, HDS Gen3, HDS Carbon and Elite Ti (7” or larger)
  - Excellent opportunity for those fishermen with Lowrance displays and Mercury power to get the full VesselView experience where they normally would only rely on analog gauges
- Info & Control features, Troll Control in 10 RPM increments, Active Trim interface to omit the dashpad, Cruise Control (RPM or Speed based), SmartTow (tow sport launch control system, RPM or Speed based), with customizable user launch profiles and new intuitive interface utilizing the Launch Target cursor
- User selectable 16 languages and soon to be 30 languages via a software update, along with multiple unit conversions. Descriptive Fault Text, Universal Fault Codes (UFCs) and Maintenance Items (for those engines equipped with this feature)

VesselView Link does not support Link Gauges out of the box. You must use a VesselView4 harness in order to drive up to two engine sets of Link gauges, or a System Monitor, System Tach or MercMonitor per engine set of Link gauges.

**Included in the VV502, VV703 and VV903 kits  
Can also be ordered as a component\***

VesselView Link Multi	8M0110641
VesselView Link Single	8M0110639
VesselView Link Multi w/Advanced Features Bundle	8M0144269

\*only supports Simrad or Lowrance compatible displays

Looking for a display that fully integrates with your propulsion system? Mercury’s VesselView Link is the answer. Offered in single engine or multi-engine (2-4 engines) versions, this is your link to all the features SmartCraft has to offer. Available on compatible Lowrance and Simrad displays, you now have all the VesselView information and control capability at your fingertips. With a user interface that’s easy to navigate, you’re able to integrate the following systems into one display.

- Chart plotter
- Sonar/fish finder
- Radar
- VHF
- AIS (Automatic Identification System)
- Sonic Hub/Fusion Link
- CZone/Naviop Digital Switching
- And many more



Learn more at [mercurymarine.com](http://mercurymarine.com)