

ANCHORLIFT[®]

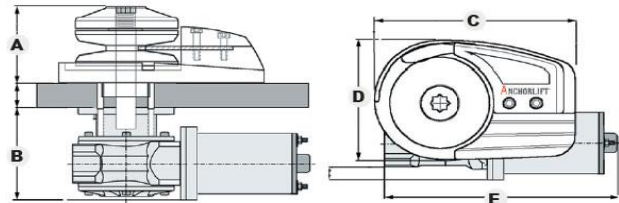
WORLD CLASS WINDLASS SYSTEM

Barracuda 600 - 900

HIGH SPEED
WINDLASS

Boats 20ft to 35ft. 6m to 11m.

B612
B912



Barracuda 600 Barracuda 900

Design for boats 6 to 11m 20ft to 35ft

Boat weight up to 4000kg / 8800lbs

Max chain size: 7mm - 1/4" length 50m - 165ft

Max anchor weight 10kg -22lbs (depending on type)

Max ground tackle weight in total: 60kg - 135lbs

Max ground tackle weight 30% of max working load.

weight chain , rope and anchor in total.

Motor gear can be mounted all 4 directions.

	A	B	C	D	E
Mm.	80	114	180	117	270
Inches	3,14	4,48	7,08	4,60	10,62

Motor: 600 - 900w 12v

Speed Down: Barracuda 600 Approx 28m / 92ft min. Barracuda 900 Approx 38m / 126ft min

Speed Up: Normal load 6mm chain approx 25m / 83ft min. Rope/chain combo: approx 33m / 109 ft min.

Amp draw down: 25amp

Amp draw up: With normal load 6mm chain approx 47amp. Rope/chain combo. approx 38amp.

Most used chain length 6mm: 30 to 50m.

Most used rope chain combos:

DB1/4-150 165ft / 50m, DB1/4-200 215ft / 65m, DB1/4-250 / 265ft / 80m

Anchors: 8kg / 17,6lbs to 10kg / 22lbs

Circuit breaker: 600w 80amp - 900w 100amp (Partno.90100)

Cable size: 25mm² / 3AWG (Normal cable length)

Switch gear: Toggle switch 90800, Rocker switch panel 90801, Footswitch 90900, Radio remote 91354, Combo switch pack 92100.

Deck thickness: 20mm to 35mm / 3/4" to 1,5" (Up to 65mm - 2,5" with longer bolts)



ANCHORLIFT[®]
WORLD CLASS WINDLASS SYSTEM

Anchorlift USA Inc. 12550 73St Court Largo 33773 Florida USA
Email: salesusa@anchorlift.com