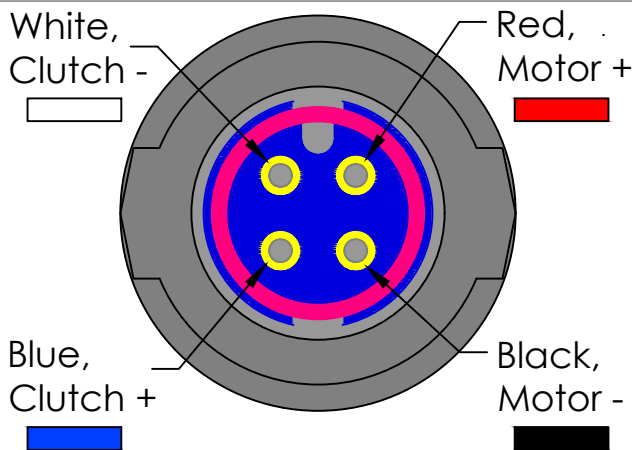
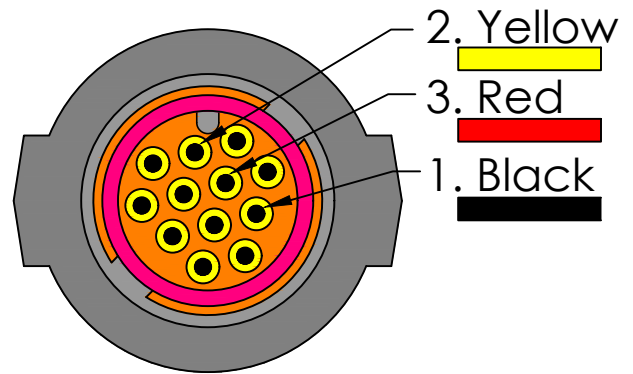


Jefa rudder feedback connectors and connections

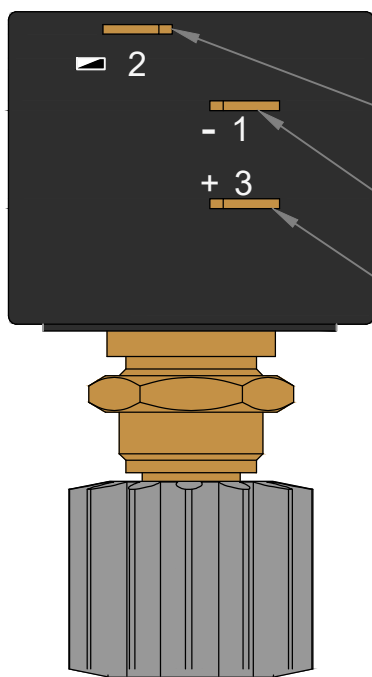


Garmin connector for Motor and Clutch



Garmin connector for Rudder feedback

Intergrated rudder feedback Potmeter connections and cables



Jefa M1
(10kOhm)

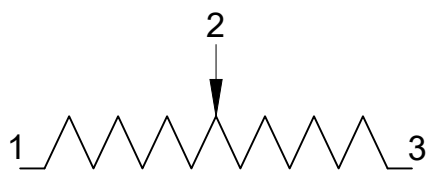
- White
- Green
- Brown

Garmin
(10Kohm)

- Yellow
- Black
- Red

Raymarine
(2kOhm)

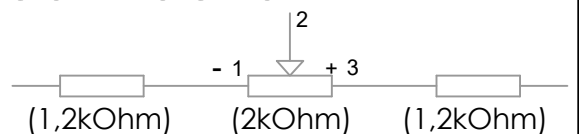
- White
- Green (+1,2kOhm)
- Brown (+1,2kOhm)



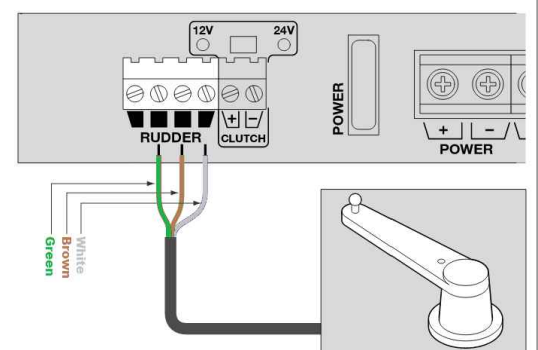
B&G NAC-2 potmeter connection


- | | | |
|-------|---|--------|
| Jefa | - | NAC-2 |
| Cable | - | Cable |
| White | - | Yellow |
| Green | - | Black |
| Brown | - | Red |

Raymarine potmeter connection



ACU-200, ACU-300, ACU-400



Modify date	Project: Jefa rudder feedback		
Modify date	Connectors and connections		
Modify date	Scale	1:1	Date 04/11-2016
Modify date	Material	-	Drawing no. Rudder feedback
Modify date	Filename (dwg)	Jefa RF1 Connectors	
Modify date	Drawn by	LS	
			Jefa STEERING Aps AGENAVEJ 43 2670 GREVE, DENMARK Tlf.+45 46155210 & Fax +45 43695211 E-mail: info@jefa.com www.jefa.com